

Save Birds. Save Life.



Birds With Altitude project

Birding locations in the Wet Tropics
Key Biodiversity Areas.

Version 1



[BIRDLIFENQ.ORG](https://birdlifeq.org)


birdlife
Northern
Queensland

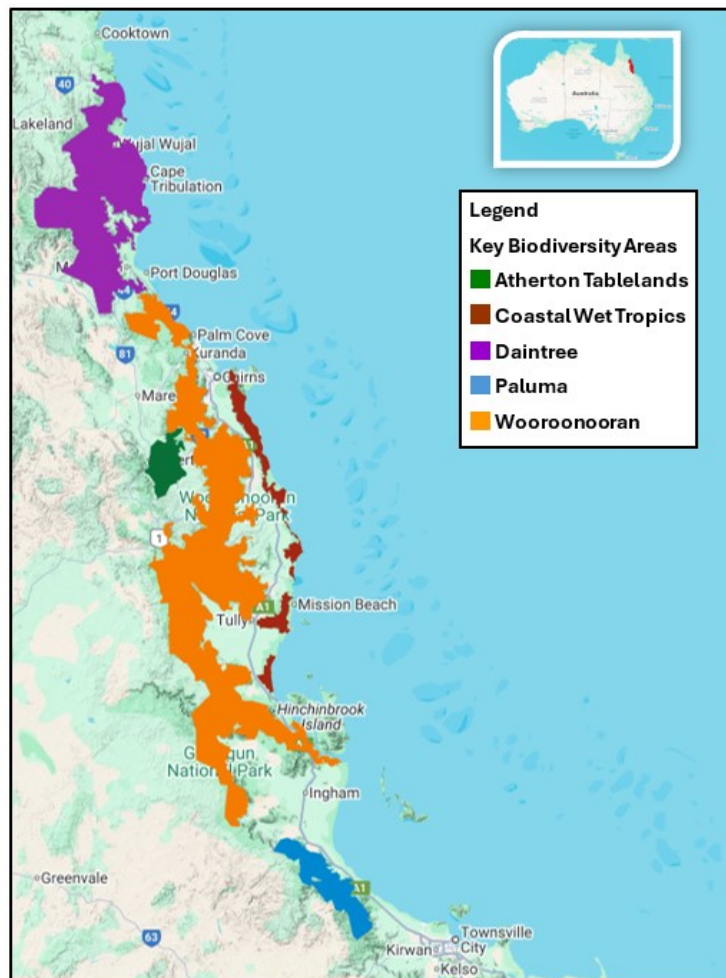
Introduction

The Birds With Altitude Project is a citizen science project led by Birdlife Northern Queensland.

Participation is simple! Venture into north Queensland's lush tropical rainforests and conduct a BirdLife Australia 2 hectare, 20 minute search survey and/or 500 metre area search survey, and enter the survey into the Birdata app. For more information on how to undertake the surveys, check out the manual or presentation on <https://www.birdlifeq.org/birds-with-altitude>






This guide describes over 60 easy to access survey sites at a range of elevations across the Wet Tropics. There is bound to be a birding site near you. Check out the map below.

More locations will be added over time. You are welcome to carry out additional surveys in the Wet Tropics Key Biodiversity Areas, wherever your Wet Tropics adventures take you.



The sites in this guide range from wheelchair-accessible paved paths to dirt roads and unformed bushwalking tracks. Each walk is graded to help you choose one that suits your ability and comfort level. The table below explains the track grade symbols used throughout the guide.

The Birds With Altitude Manual also includes important health and safety information, including a risk assessment (<https://www.birdlifeng.org/birds-with-altitude>), to help you enjoy a safe and enjoyable birdwatching experience. Make sure you read it.

Symbol	Track description
 Grade 1	No bushwalking experience required. Flat, even surface with no steps or steep sections. Suitable for wheelchair users who have someone to assist them.
 Grade 2	No bushwalking experience required. The track is a hardened or compacted surface and may have a gentle hill section or sections and occasional steps.
 Grade 3	Suitable for most ages and fitness levels. Some bushwalking experience recommended. Tracks may have short steep hill sections, a rough surface or many steps.
 Grade 4	Bushwalking experience recommended. Tracks may be long, rough and very steep. Directional signs may be limited.
 Grade 5	Very experienced bushwalkers with specialised skills, including navigation and emergency first aid. Tracks are likely to be very rough, very steep and unmarked.

Birding locations

For more information about Queensland National Park access and walks go to: <https://parks.qld.gov.au/>



Near South Johnstone River Campground in the Misty Mountains, Wooroonooran National Park

Birding sites in the Atherton Tablelands Key Biodiversity Area

- Curtain Fig Tree
- Peterson's Creek, Allumbah Pocket, Yungaburra
- Hastie's Swamp National Park
- Wongabel State Forest
- Halloran's Hill Conservation Park, Atherton
- Platypus Park, Atherton
- Malanda Falls Conservation Park



Brown Gerygone © Alan Sweet

Atherton Tablelands Key Biodiversity Area

Curtain Figtree

-17.28599; 145.57404 | 727 m asl

Suitable for 2 ha, 20 min area search



The Curtain Fig Tree, just 2 km from Yungaburra on the Atherton Tableland, is a popular birdwatching spot within endangered Mabi forest. The highlight is a massive strangler fig (*Ficus virens*) forming a curtain of roots over 15 metres high. This remarkable tree is a highlight for visitors and provides important habitat for a variety of forest-dependent bird species.

A 180 m Grade 2 boardwalk encircles the tree and is the only publicly accessible part of the national park. It has a compact surface, no stairs, and a gentle slope - some people with disability may use the boardwalk with assistance.

The boardwalk and car park area is well-suited for a standard 2 hectare, 20 minute bird survey, taking care to avoid traffic. Surveying early in the day will avoid the crowds.



Atherton Tablelands Key Biodiversity Area

Peterson's Creek, Allumbah Pocket, Yungaburra

-17.26994; 145.57936 | 696 asl

Suitable for 2 ha, 20 min and/or 500 m area searches



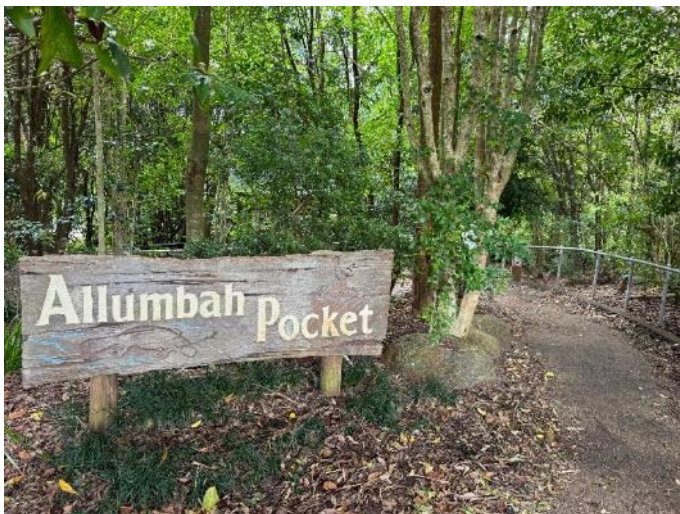
Petersons Creek, accessed from the end of Penda Street at Allumbah Pocket in Yungaburra, is a scenic and species-rich birding site within an area of ongoing Mabi forest restoration.

The site includes well-formed walking tracks with dirt paths, boardwalks and occasional steps. A suspension bridge spans the creek and provides good viewing opportunities, with platypus sometimes observed in the water below.

Beyond birds, the forested creek corridor supports a range of wildlife, including wallabies, possums, tree kangaroos and flying foxes.

The area is suitable for either a 2 hectare, 20 minute survey or a 500 m area search conducted along Petersons Creek.

Basic facilities are available, with seating and picnic tables located at intervals along the track.



Atherton Tablelands Key Biodiversity Area

Hastie's Swamp National Park

-17.30540; 145.47813 | 760 asl

Suitable for 2 ha, 20 min and/or 500 m area searches

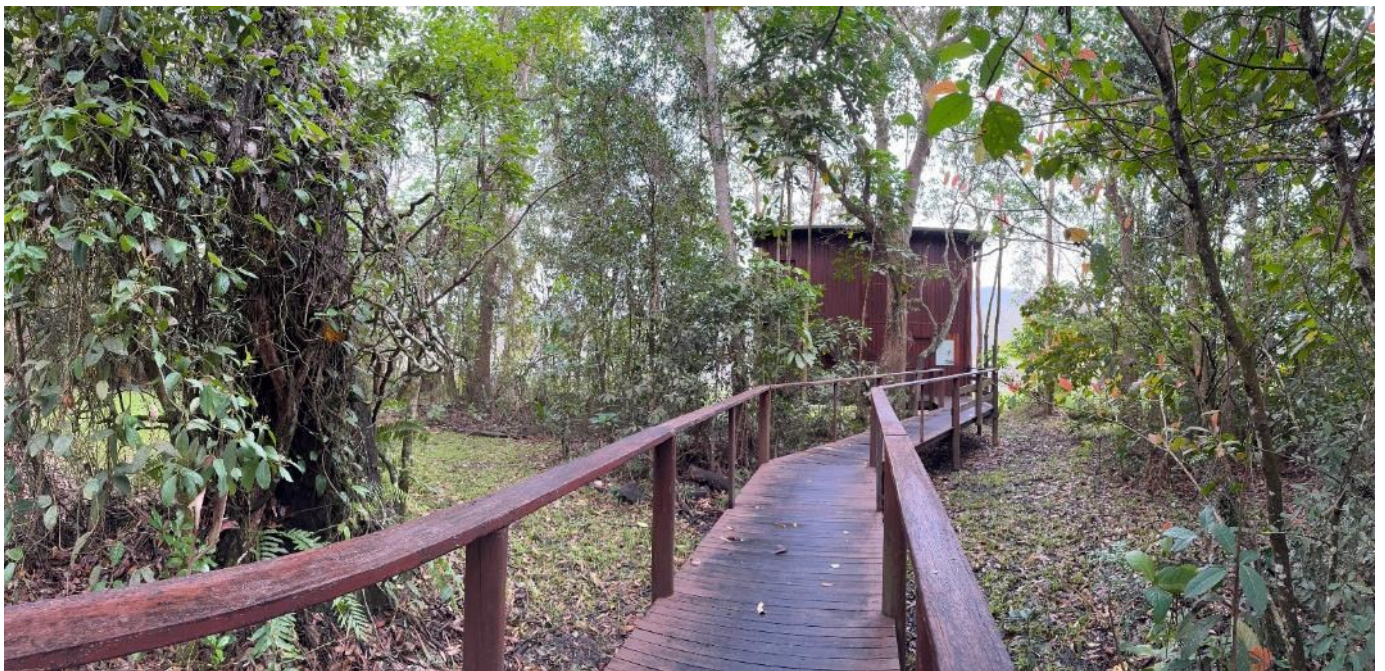


Hastie's Swamp is a large seasonal wetland surrounded by open eucalypt forest and pockets of rainforest, making it a haven for both resident and migratory bird species. Over 220 species have been recorded here, making it a rewarding destination for birdwatchers.

Visitors can enjoy expansive views and excellent birdwatching opportunities from the two-storey bird hide or stroll along the roadside to spot woodland birds in the surrounding vegetation.

The lower level of the bird hide, nearby toilets, and the roadside walking area are all wheelchair-accessible - though care should be taken with traffic if walking along the road.

The area is ideal for 2 hectare, 20 minute surveys or a 500 m area search.



Atherton Tablelands Key Biodiversity Area

Wongabel State Forest

-17.3321; 145.5004 | 733 m asl

Suitable for 2 ha, 20 min and/or 500 m area searches



Located 8 km south of Atherton along the Kennedy Highway, Wongabel State Forest offers two easy forest walks. One is a 750 m return trail through endangered Mabi forest, while the other is a 2.5 km return walk passing through Mabi forest and hoop pine plantations.

Over 100 bird species have been recorded here, and it's also a good spot to watch for tree kangaroos, possums, pademelons, and musky rat-kangaroos.

There are no facilities on site.

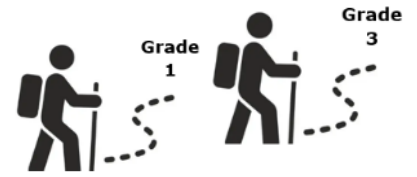


Atherton Tablelands Key Biodiversity Area

Halloran's Hill Conservation Park, Atherton

-17.26520; 145.49050 | 870 m asl at summit

Suitable for 2 ha, 20 min and/or 500 m area searches



Halloran's Hill is an extinct volcanic cone at Atherton, with a 1.4 km walking track running from the summit to the base. The track passes through open eucalypt woodland and endangered Mabi forest, offering a good mix of bird habitats.

Terrain is hilly and steep in places, and several sidetracks lead to nearby streets.

Birdwatchers can explore the summit parkland at the edge of the forest or walk along the track to spot a variety of species.

At the summit, a council park provides barbecues, toilets, tables, and play equipment. The summit parkland is wheelchair accessible.

From the lookout, there are wide views over the Tablelands, and it's a great spot to watch for raptors soaring overhead.



Atherton Tablelands Key Biodiversity Area

Platypus Park, Atherton

-17.27805; 145.47302 | 770 m asl

Suitable for a 2 ha, 20 min area search



Located on the south side of Atherton along Herberton Road, this small park features remnant rainforest and restored habitat. It's just a stone's throw from Herberton Range State Forest and Mount Baldy Forest Reserve.

It's easy to overlook as a birdwatching location, but more than 100 bird species have been recorded here. The park supports a variety of rainforest, open forest, and wetland birds.

Picnic shelters and a café are available on site.



Atherton Tablelands Key Biodiversity Area

Malanda Falls Conservation Park

-17.35585; 145.58697 | 750 m asl

Suitable for 2 ha, 20 min and/or 500 m area searches



Located on the Malanda–Atherton Road just outside Malanda, this conservation park protects remnant rainforest along the North Johnstone River. The picturesque Malanda Falls tumble over basalt rock formed by an ancient lava flow.

Two short, easy-grade walks offer excellent birdwatching opportunities. The 1 km Tulip Oak Walk loops along the river and through rainforest, with a viewing deck where you might spot platypus, fish, and turtles. The 1.5 km return Rainforest Walk also offers a gentle stroll through lush forest.

Well over 100 bird species have been recorded here. You may also encounter platypus, tree kangaroos, possums, and pademelons.

Facilities include toilets, a picnic area, and the award-winning Malanda Falls Visitor Centre, which features interactive displays on the Tablelands' unique volcanic landscape, cultural heritage, and native wildlife.

Surveying early or late in the day will avoid the crowds. Birds to look out for include Grey-headed Robin, Bower's Shrike-Thrush, Brown Gerygone, Tooth-billed Bowerbird and Eastern Whipbird.



Birding sites in the Coastal Wet Tropics Key Biodiversity Area

- Russell River National Park (Graham Range section)
- Tower Road, near Bramston Beach
- Licuala Rainforest Circuit, Djiru National Park
- Musgravea Track, Djiru National Park
- Lacey Creek walking trail, Djiru National Park
- The Dreaming Trail, Djiru National Park
- Bicton Hill, near Mission Beach
- Edmund Kennedy section of Girramay National Park



Southern Cassowary © Dominic Chaplin

Coastal Wet Tropics Key Biodiversity Area

Russell River National Park (Graham Range section)

-17.30201; 146.00102 | 13 m asl

Suitable for 2 ha, 20 min and/or 500 m area searches



Russell River National Park (Graham Range section), just north of Bramston Beach, offers a quiet, scenic spot for birdwatching. Access is via Bramston Beach — turn into Sassafras Street and continue 5.5 km on an unsealed road to the national park. From the boundary, it's another 1.4 km to the campground at Bluemetal Creek.

The road can be rough and may require 4WD after rain. Check park alerts before visiting and [Be Crocwise](#)— crocodiles may be present.

The vegetation in this tranquil and unspoilt area includes open forest, as well as paperbark and mangrove lined creeks. The road is generally quiet, and birdwatchers can undertake 2 hectare, 20 minute area searches or 500 metre area searches on foot while walking along it. Care should be taken to watch for any occasional traffic, especially on weekends.

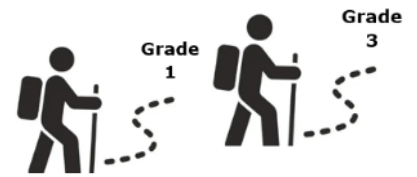


Coastal Wet Tropics Key Biodiversity Area

Tower Road, near Bramston Beach

-17.3858988; 145.9968438 | 75 - 300 m asl

Suitable for 2 ha, 20 min area searches

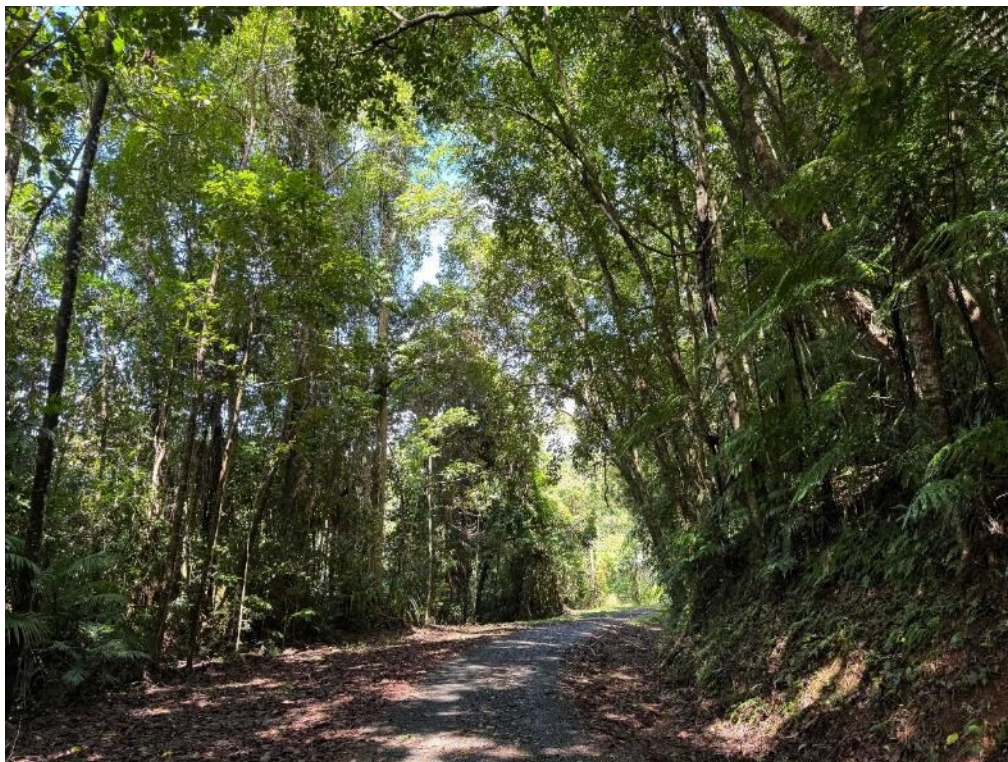


Tower Road is located off Bramston Beach Road, approximately 11.5 km from Miriwinni, and 5.6 km from Bramston Beach. Follow the narrow-sealed road for about 500 m. This is where the roadside forest becomes part of the Coastal Wet Tropics KBA. From here the gradient climbs steadily from 65 m to just over 300 m elevation at the top of Mount Peter.

It is also possible to park 500 m further up the road outside the gate leading to the telecommunications towers, being sure to leave the service road clear. Driving up the narrow four-wheel drive service road is not recommended. Permitted traffic is infrequent, but remain alert for occasional vehicles.

Surveys can be conducted by walking along Tower Road. Due to the elevation change, 2 hectare, 20 minute surveys are recommended. Southern Cassowary, fruit doves, Victoria's Riflebird and catbird can be found in this area.

There are sheltered picnic tables and public toilets at nearby Bramston Beach.



Coastal Wet Tropics Key Biodiversity Area

Licuala Rainforest Circuit, Djiru National Park

-17.8512; 146.0647 | 34 m asl

Suitable for 2 ha, 20 min and/or 500 m area searches



The Licuala Rainforest Circuit is a 1.6 km easy graded walk through a striking fan palm forest in Djiru National Park. The track passes through dense stands of *Licuala ramsayi*, a native fan palm that thrives in wet, poorly drained lowland areas. This forest is one of the few remaining examples of lowland fan palm habitat in North Queensland.

The turnoff to the walk is signposted 9 km along the road from Mission Beach to Tully. From there, follow the dirt road for 1 km to the picnic area where the walk begins. Picnic tables are provided.

Surveys can be conducted while walking along the track. Amongst the 146 species recorded here, the surrounding rainforest offers opportunities to record Southern Cassowary, fruit doves, Black Butcherbird and Orange-footed Scrubfowl. Alternatively, you may choose to walk along the access road, being mindful of vehicle traffic.



Coastal Wet Tropics Key Biodiversity Area

Musgravea Track, Djiru National Park

-17.9050698; 146.0690073 | 34 m asl

Suitable for 2 ha, 20 min and/or 500 m area searches



The Musgravea Track starts at the Licuala day-use area car park, heads north for 6 km (one way), and exits onto the El Arish–Mission Beach Road, approximately 2 km east of the Lacey Creek day-use area. The route follows an old forestry road used during the 1960s and 1970s to haul timber from South Mission Beach to the El Arish timber mill. The track is therefore wide and is used by both walkers and mountain bikes.

The dirt track has a gentle gradient and generally smooth surface, with occasional obstacles such as tree roots, logs and scattered rocks. Creeks along the route are subject to flash flooding, so caution is advised, particularly after heavy rain.

Bird surveys can be undertaken while walking along the track, with both 2 hectare, 20 minute, and 500 m area searches suitable. Even a single survey completed from the car park can be rewarding. Southern Cassowary frequently use this corridor and may be encountered along the track.



Coastal Wet Tropics Key Biodiversity Area

Lacey Creek walking trail, Djiru National Park

-17.85072; 146.06513 | 39 m asl (Lacey Creek car park)

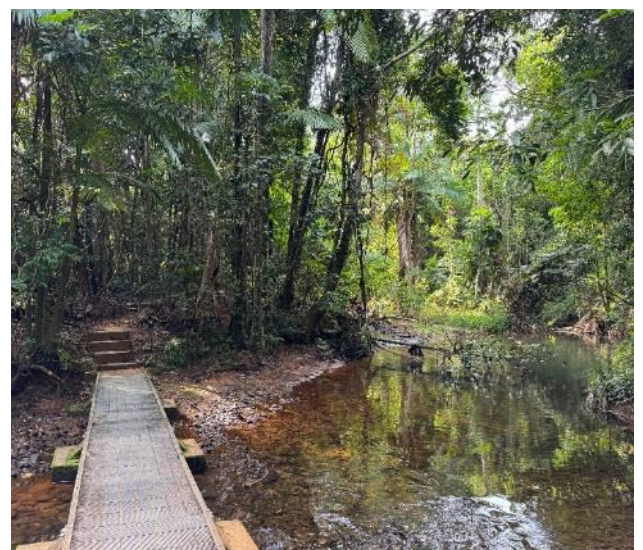
Suitable for 2 ha, 20 min and/or 500 m area searches



Just 7.5 km from Mission Beach along the El Arish – Mission Beach Road, Lacey Creek offers an easy 1.2 km rainforest circuit. Starting from the car park on the northern side of the road, the track winds through lush tropical forest and includes a few gentle steps. A viewing platform along the way provides a chance to spot saw-shelled turtles and fish in the clear creek below.

If you enter the track in an anticlockwise direction, the first 100 m to the interpretative shelter is wheelchair accessible as are the picnic and toilet facilities near the car park.

The area is exceptionally rich in birdlife, with more than 140 species recorded. These include five species of kingfishers, among them the striking Buff-breasted Paradise-Kingfisher, easily recognised by its long white tail. Besides the iconic Southern Cassowary, birds to watch for include Eastern Whipbird, Chowchilla, Victoria's Riflebird, Black-eared Catbird, Macleay's Honeyeater, Fairy Gerygone, Black Butcherbird, Little Shrike-thrush and monarchs. Surveying early or late in the day will avoid the crowds.



Coastal Wet Tropics Key Biodiversity Area

The Dreaming Trail, Djiru National Park

-17.85072; 146.06513 | starting at 39 m asl

Suitable for 2 ha, 20 min area searches



The Dreaming Trail starts on the southern side of the El Arish–Mission Beach Road, directly opposite the Lacey Creek car park, around 7.5 km from Mission Beach.

This rough 3.2 km (on-way) track climbs steeply through dense rainforest and is best suited to experienced walkers. It eventually meets up with the Musgravea Track where that track exits onto the El Arish–Mission Beach Road, approximately 2 km east of the Lacey Creek day-use area.

For birdwatchers, the first 200 metres from the Lacey Creek crossing are more accessible and offer excellent opportunities to spot birdlife without tackling the full climb or track.

If exploring further, we recommend 2 hectare, 20 minute searches along this trail because of the rapid changes in altitude.



Coastal Wet Tropics Key Biodiversity Area

Bicton Hill, near Mission Beach

-17.8358; 146.1005 | 20 - 150 m asl

Suitable for 2 ha, 20 min searches



The Bicton Hill Circuit Track in Clump Mountain National Park is accessed from 193 Alexander Drive, about 5 km north of Mission Beach.

This 3.9 km return walk climbs a moderately steep hill through lowland rainforest (jungle) and offers spectacular views of the mainland and nearby islands from the lookout. Graded as a moderate (Grade 3) walk, it is suitable for those with a reasonable level of fitness.

Birds commonly seen include the Southern Cassowary, Wompoo Fruit-Dove, Torresian Imperial-Pigeon, Victoria's Riflebird, Black-eared Catbird, Macleay's Honeyeater, Fairy Gerygone, Black Butcherbird, Little Shrike-thrush and monarchs.

There are no day use facilities.

Because of the rapid changes in altitude we recommend 2 hectare, 20 minute searches.



Coastal Wet Tropics Key Biodiversity Area

Edmund Kennedy section of Girramay National Park

-18.2129840; 146.0122630 | 12 m asl

Suitable for 2 ha, 20 min and/or 500 m area searches



The Edmund Kennedy section of Girramay National Park is located just north of Cardwell. Travel about 3 km along Clift Road following the national park signs, to reach the park entrance. This low-lying area features a rich mix of habitats, including lowland rainforest, open eucalypt forest, paperbark woodland, sedge swamps, and one of the most diverse mangrove ecosystems in Australia.

Over 170 bird species have been recorded here. Birdwatching along the road is rewarding, with chances to see Shining Flycatcher, honeyeaters, Rufous Fantail, monarchs, Lovely Fairy-wrens, Black Butcherbird and Orange-footed Scrubfowl.

Stop at intervals to complete surveys along the road, but take care to avoid any passing vehicles. There are no day use facilities.



Birding sites in the Daintree Key Biodiversity Area

- Mossman Gorge Rainforest Circuit
- Mount Alexandra Lookout, Daintree National Park
- Jindalba Boardwalk and Circuit Track, Daintree National Park
- Madja Boardwalk, Daintree National Park
- Dubuji boardwalk and day use area, Daintree National Park
- Kulki Boardwalk



Azure Kingfisher © Dominic Chaplin

Daintree Key Biodiversity Area

Mossman Gorge Rainforest Circuit

-16.47074; 145.32941 | 92 m asl

Suitable for 2 ha, 20 min and/or 500 m area searches



Mossman Gorge, in Daintree National Park, is reached by turning off at Johnston Road and then following Mossman Gorge Road to the Mossman Gorge Cultural Centre. From there, an entry fee covers shuttle bus transport into the gorge.

The 2.4 km Rainforest Circuit Track, starting from Rex Creek Bridge, offers an easy to moderate walk (up to Grade 3) through dense lowland rainforest. For a quieter experience, follow the full 2.7 km loop to avoid the busy picnic area.

Birds to watch for include Double-eyed Fig-Parrot, Noisy Pitta, Pied Monarch and Yellow-breasted Boatbill.

Surveying early in the day will avoid the crowds.



Daintree Key Biodiversity Area

Mount Alexandra Lookout, Daintree National Park

-16.246; 145.436 | 209 m asl

Suitable for 2 ha, 20 min area search



Alexandra Lookout, in the Cape Tribulation section of Daintree National Park, is located 10 km north of the Daintree ferry along Cape Tribulation Road.

A signposted turn-off leads to the lookout, which offers breathtaking views over lush lowland rainforest, the mouth of the Daintree River, the distant Port Douglas headland, and the Coral Sea.

The area around the lookout and car park is suitable for a 2 hectare, 20 minute area search. This site can get busy. Best go early to avoid the sightseers and take extra care around traffic when birding near the road.



Daintree Key Biodiversity Area

Jindalba Boardwalk and Circuit Track, Daintree National Park

-16.238; 145.432 | 57 m asl

Suitable for 2 ha, 20 min and/or 500 m area searches



Jindalba, in Daintree National Park, is accessed by driving 10 km north of the Daintree ferry on Cape Tribulation Road, then turning right into Tulip Oak Road, 2 km past Mount Alexandra Lookout. From there, continue 1 km to the Jindalba car park and rainforest-lined day-use area at the foot of Mount Alexandra, which has picnic tables (some sheltered) and toilets.

Walking options include: the 650 m return Jindalba boardwalk (Grade 2) and the more challenging 3 km Jindalba Circuit Track (Grade 4), both offering an immersive experience in lush tropical rainforest. Alternatively, you may choose to walk along the access road, being mindful of vehicle traffic.

Look for Southern Cassowary, Buff-breasted Paradise-Kingfisher, Wompoo Fruit-Dove, Superb Fruit-Dove and Noisy Pitta as well as Wet Tropics endemic birds.



Daintree Key Biodiversity Area

Madja Boardwalk, Daintree National Park

-16.1379; 145.4404 | 17 m asl

Suitable for 2 ha, 20 min and/or 500 m area searches



Madja Boardwalk, in the Cape Tribulation section of Daintree National Park, is 27 km north of the Daintree Ferry along Cape Tribulation Road, with the car park located 6 km past Thornton Beach.

This 1.2 km circuit (Grade 1) offers an easy and accessible walk through dense lowland rainforest that gradually gives way to mangrove-lined creek habitat. The boardwalk crosses Noah Creek, where the lush forest meets the mangroves, creating a rich and varied environment to explore.

The Daintree is home to the highest concentration of the world's 19 primitive plant families. As you walk, look for signs along the boardwalk that label key plant species and highlight the evolutionary journey of plants through time.



Daintree Key Biodiversity Area

Dubuji boardwalk and day use area, Daintree National Park

-16.089293, 145.462555 | 12 m asl

Suitable for 2 ha, 20 min and/or 500 m area searches



Dubuji track and boardwalk is 34 km north of the Daintree Ferry along Cape Tribulation Road and 5 km past the Noah Creek camping area..

The boardwalk, a 1.2km (start and finish points are about 300m apart) circuit (Grade 1) through lowland rainforest and mangrove swamp, is wheelchair-accessible with assistance. The day use picnic area is an easy stroll along a bush path through the forest.

Complete a 2 hectare, 20 minute and/or 500 m area search by monitoring birds as you slowly walk along the trails.

Look for Azure and Little Kingfishers in the mangrove swamp; they frequently dart from overhanging branches into shallow water.



Daintree Key Biodiversity Area

Kulki Boardwalk

-16.0778; 145.470 | 18 m asl

Suitable for 2 ha, 20 min and/or 500 m area searches



Kulki Boardwalk, in the Cape Tribulation section of Daintree National Park, is 35 km north of the Daintree Ferry along Cape Tribulation Road, with a signposted car park located 7 km past the Noah Beach camping area.

This 600 m return walk (Grade 1) is an easy stroll leading to an iconic viewpoint where rainforest-covered slopes meet sandy beaches and rocky headlands. The area has toilets and picnic tables, making it a good spot to pause and enjoy the scenery.

From the same car park, Myall Beach can be accessed via a 350 m walking track (Grade 3), offering a view of where the rainforest meets the reef.



Birding sites in the Paluma Key Biodiversity Area

- Little Crystal Creek, Mount Spec Road
- Andree Griffin Walking Trail to Cloudy Creek, Paluma
- Paluma Rainforest Track
- Paluma H Track
- McClelland's Lookout
- Witt Lookout Track
- Cloudy Creek Track from Witt Lookout Track junction
- Star Valley Lookout
- Culvert 81 Track to Ethel Falls
- Birthday Creek Falls
- Lake Paluma picnic and camping area
- Walking trails the other side of Paluma Dam wall.
- The Grandis



Golden Bowerbird © Peter Valentine

Paluma Key Biodiversity Area

Little Crystal Creek, Mount Spec Road

-19.0156; 146.2666 | 344 m asl

Suitable for 2 ha, 20 min area search only



Take the turn off on the Bruce Highway to Paluma and travel 27 km to Little Crystal Creek. A dedicated car park is available on the left opposite the picnic area, which has amenities and picnic tables including barbeques. The location is a popular tourist picnic and swimming area. Surveying early in the day should avoid the crowds.

Being careful of vehicle traffic, survey the rainforest area around the car park and picnic area, and along the road (where safe) to Little Crystal Creek Bridge and about 100 m further along the road.



Paluma Key Biodiversity Area

Andree Griffin Walking Trail to Cloudy Creek, Paluma

-19.0069; 146.2067 | 886 m asl



Suitable for 2 ha, 20 min and/or 500 m area searches

Andree Griffin Walking Trail is easy to access from Smith Crescent adjacent to the Paluma town common and picnic area (behind the Community Centre). There are amenities and picnic tables in the Town Common. The walking trail is about 720 m long, reasonably well marked, but uneven underfoot. Care is recommended. The track passes through rainforest to a small scenic weir on the creek.

Complete a 2 hectare, 20 minute and/or 500 m area search by monitoring birds as you slowly walk along the trail, then return the way you came.

Andree Griffin Walking Trail joins Cloudy Creek Track and Witts Lookout Track, so it is possible for the very fit and well-prepared hiker who has a map and adequate supplies (including drinking water), to continue to survey along the trails until they come out at McClelland's Lookout car park, and then walk back through town to the Paluma Town Common/your car (a total distance of about 4 km).



Paluma Key Biodiversity Area

Paluma Rainforest Track

-19.0076; 146.2064 | 873 m asl

Suitable for 2 ha, 20 min and/or 500 m area searches



Paluma Rainforest Track starts opposite the Paluma Town Hall and finishes 200m to the west along Mount Spec Road. This scenic 500-600 m track is well made, and an easy grade, but with a few steps as the trail dips down from the road to a picturesque creek and back up again.

Commence surveys from the track entrance on Mount Spec Road. A 500 m area search can be completed by walking the whole track, recording birds as you walk. Or alternatively you may choose to walk a shorter section of the track undertaking a 2 hectare, 20 minute area search. Over 100 bird species have been recorded on this track, including the secretive Fernwren.



Paluma Key Biodiversity Area

Paluma H Track

-19.011037, 146.210232 | 880 m asl

Suitable for 2 ha, 20 min and/or 500 m area searches



The H track is a 1.3 km loop track that starts on Whalley Crescent and finishes on Lennox Crescent - both roads are off Mount Spec Road in the Paluma township. The Queensland Parks & Wildlife Service (QPWS) identifies the track as a moderate grade. The trail is an old timber hauling snig track. There may be other tracks that join the track, so make sure you stay on the H track unless you intend to walk much further.

To survey, you may choose to walk the whole loop track or just part of it, completing either 2 hectare, 20 minute and/or 500 m area searches as you walk. Seventy bird species have been recorded on the Paluma H track.



Paluma Key Biodiversity Area

McClelland's Lookout

-19.0065; 146.2132 | 905 m asl

Suitable for 2 ha, 20 min area search



This is an easy access site with amenities. Barbecues, picnic tables and toilets are provided. There is also a shelter shed.

To access McClelland's Lookout and picnic area, turn off Mount Spec Road onto Loop Road (where signposted), just east of the Paluma township. From the car park, an easy grade 150 m walking track leads to the lookout. Wheelchair access to the Lookout is via the second entrance a short distance further along Loop Road and along a 200 m bitumen walking path. The lookout offers sweeping views of Halifax Bay and the Palm Islands.

Surveying early in the day will avoid the crowds. A 2 hectare, 20 minute area search can be completed from the entrance of either car park or by surveying around the edges of the picnic area. Over 90 bird species have been recorded here.



Paluma Key Biodiversity Area

Witt Lookout Track

-19.0067; 146.2120 | 900 m asl

Suitable for 2 ha, 20 min and/or 500 m area searches



Witt Lookout track starts 200 m beyond McClelland's lookout (see details above). The track is a 3 km return walk, moderate grade.

From the lookout follow the 200 m long wheelchair-accessible, bitumen path to the start of the walk. At the signposted junction take the right-hand-route to Witt Lookout. From here the track climbs steeply through open forest before finishing at lookouts on two rocky outcrops. There is an upper and lower lookout. On a clear day enjoy spectacular views of Halifax Bay and the Palm Islands to the north-east. Complete either 2 hectare, 20 minute and/or 500 m area searches as you walk.



Paluma Key Biodiversity Area

Cloudy Creek Track from Witt Lookout Track junction

-19.0013; 146.2089 | 920 m asl

Suitable for 2 ha, 20 min and/or 500 m area searches



Cloudy Creek walking track is a moderate grade, 4 km return walk. The track follows the beginning route as the walk to Witt lookout (see details above). However, when you reach the signposted junction, follow the Cloudy Creek walking track to the left. The rainforest track leads to a series of small waterfalls along Cloudy Creek. Some sections of this walk are steep with many steps and boulder hopping.

This walking track is suitable for both 2 hectare, 20 minute or 500 m area searches.



Paluma Key Biodiversity Area

Star Valley Lookout

-19.0138; 146.1806 | 901 m asl

Suitable for 2 ha, 20 min and/or 500 m area searches

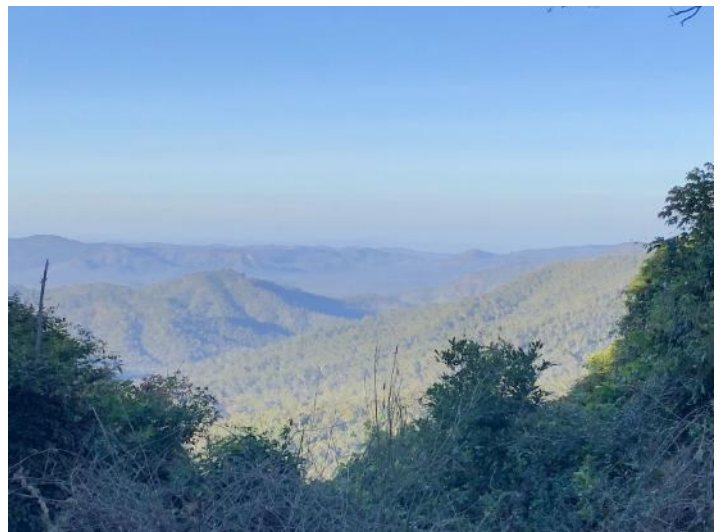


Follow Mount Spec Road about 3.5 km west of Paluma, until you reach Star Valley Lookout and its car park on the left side of the road.

Staying on the road verges and being mindful of vehicle traffic, it is possible to complete a 2 hectare, 20 minute and/or 500 m area search walking along Mount Spec Road and scanning the rainforest on either side of the road.

Do not forget to pause to enjoy the views of Star Valley from the car park before you leave.

Upland endemic bird species can be found along this section of road including species of conservation concern such as Fernwren, Grey-headed Robin, Bower's Shrike-thrush, Brown Gerygone, Golden and Tooth-billed Bowerbird, and Wet Tropics Crimson Rosella and Australian King-Parrot.



Paluma Key Biodiversity Area

Culvert 81 Track to Ethel Falls

-19.00105; 146.17760 | 900 m asl

Suitable for 2 ha, 20 min area searches



From Paluma township, head towards Paluma Dam. On the dirt Paluma Dam Road, drive for a few kilometres until you reach culvert 81 (the drain is marked as such), then find somewhere safe to park off the road. About 75 m past culvert 81 is a walking track on the right. This track leads to Ethel Falls. There are no facilities here. A map is available at <https://paluma.org/attractions/walking-tracks> to provide guidance.

The track is good for the first kilometre or so and the elevation is even, so it is possible to complete 2 hectare, 20 minute area searches while walking along the track.

When the track forks to Ethel Falls and to the dam, the trail becomes more uneven underfoot, and particularly on the Dam track, harder to discern. For the fit and capable hiker, the walk down to Ethel Falls is a steep climb to the bottom of the falls, over rough ground, and boulders. There is a fixed rope for use as a handrail most of the way down. If longer hikes are of interest to you, the Culvert 81 Track is part of a trail network that includes day hikes and multi-day hikes, for the well-prepared, experienced hiker. Walking experience is strongly recommended. Consider the need for specialised skills, including navigation and emergency first aid. Tracks may be long, rough, and steep. Directional signs may be limited. Stay on the paths and observe the trail markers that indicate the track you wish to take.



Paluma Key Biodiversity Area

Birthday Creek Falls

-18.9764; 146.1606 | 855 m asl

Suitable for 2 ha, 20 min and/or 500 m area searches



Head west from Paluma for about 5 km on Mount Spec Road and then turn right onto Paluma Dam Road. The Birthday Creek Falls car park is about 7 km along on the left. Birthday Creek Falls walk is a 1 km return, easy to moderate grade walk.

It is possible to complete 2 hectare, 20 minute and/or a 500 m area search walking along the track.

Upland endemic bird species can be found here including species of conservation concern such as Grey-headed Robin, Bower's Shrike-thrush, Brown Gerygone, Golden and Tooth-billed Bowerbirds, and Wet Tropics Crimson Rosella and Australian King-Parrot.



Paluma Key Biodiversity Area

Lake Paluma picnic and camping area

-18.9561; 146.1487 | 911 m asl

Suitable for 2 ha, 20 min and/or 500 m area searches



Paluma is about 16 km from Paluma, travelling west on Mount Spec Road and then taking the left turn to Paluma Dam.

Both day use picnic areas (with barbeques), and overnight camping facilities are available.

The area, surrounded by World Heritage rainforest, is a popular attraction for those wishing to escape the heat of the coast.

It is possible to conduct a 2 hectare, 20 minute area search by just (unobtrusively) wandering around the roads in the picnic areas and campgrounds. The walking grade is easy, and possible in a wheelchair.

Upland endemic bird species can be found here including species of conservation concern such as Grey-headed Robin, Brown Gerygone, and Wet Tropics Australian King-Parrot.



Paluma Key Biodiversity Area

Walking trails the other side of Paluma Dam wall.

-18.955750; 146.150324 | 905 m asl

Suitable for 2 ha, 20 min area searches



From the main Lake Paluma camping area (see details above), it is possible to drive across a dam wall to another camping area called Riflebird Gully. There are amenities next to the roundabout.

A walking trail starts adjacent to the Riflebird Gully Camping Area. The initial track grade is moderate. It is possible to walk along the track and return by the same route.

As the trail changes in elevation, it is recommended that 2 hectare, 20 minute area searches are completed rather than 500 m area searches. Surveys can be completed by walking along the trail. If time is not limited and the walker is prepared, it is possible to keep following that walking trail repeating the 2 hectare, 20 minute surveys at intervals along the trail.

If longer hikes are of interest to you, this track is part of an extensive trail network that includes day hikes and multi-day hikes, for the well-prepared, experienced hiker. It is possible to circumnavigate the lake (13 km) or explore much further into the national park. Maps are available at <https://paluma.org/attractions/walking-tracks> to provide guidance. Walking experience is strongly recommended. Consider the need for specialised skills, including navigation and emergency first aid. Tracks may be long, rough, and steep. Directional signs may be limited. Stay on the paths and observe the trail markers that indicate the track you wish to take.



Paluma Key Biodiversity Area

The Grandis

-19.02099; 146.14369 | 905 m asl

Suitable for 2 ha, 20 min and/or 500 m area searches



The Grandis is a well-known local birding location, about 8 km west of Paluma township on the Mount Spec and Ewan-Paluma Road. When travelling west, an unmarked dirt track on the right leads into a small clearing where it is possible to park off road in the *Eucalyptus grandis* forest. There are no facilities, but there is an old forest track that can be followed on foot to explore a bit further.

The elevation is even so it is possible to conduct a 2 hectare, 20 minute and/or 500 m area search surveys depending on the time you have available. Survey areas include from the main road to the clearing and beyond on the dirt track depending on the survey method used. The track past the clearing can be uneven so take care. Stay on the track and return via the same path. There are no trail markers.

This is a great transitional site between the Wet Tropics rainforest and sclerophyll forest so a variety of bird species can be encountered including Pale Yellow and Eastern Yellow Robin, Golden and Rufous Whistlers, Bowers and Little/Rufous Shrike-thrush, Victoria's Riflebird and Eastern Whipbird.



Birding sites in the Wooroonooran Key Biodiversity Area

- Behana Creek Gorge Track
- Goldfield Track (near entrance at Babinda Boulders)
- Josephine Falls
- Bartle Frere Walking Track (near entrance at Josephine Falls car park)
- Mamu Tropical Skywalk
- K-Tree Rd (off Palmerston Highway)
- South Johnstone River Campground
- Maple Creek Road (600 metre sites), Misty Mountains
- Henrietta Creek Campground (Palmerston Highway)
- Scenic Drive (from Palmerston Highway)
- Bartle Frere Walking Track (from Gourka Road, Butchers Creek) and/or Junction Camp site
- Stockwellia Tree Track (on Gourka Road, Butchers Creek)
- Windin Falls Walking Track (from Gourka Road)
- Suttie's Gap Road (Misty Mountains)
- Hinsen Creek trailhead, Suttie's Gap Road (Misty Mountains)
- Gillies Highway Mulgrave River access
- Cathedral Fig Tree, Danbulla Forest Drive
- Mobo Creek Crater, Danbulla Forest Drive
- Lake Euramoo Lookout and Track (Danbulla Road)
- Arthur Baillie Road, near Ravenshoe
- Charmillan Creek (Wabunga Wayemba), near Ravenshoe
- Tully Gorge Lookout (near Ravenshoe)
- Kahlpahlim Rock Trail, Davies Creek, Dinden National Park
- Davies Creek Road – near Kahlpahlim Rock Trailhead
- Barron Falls Lookout Track, near Kuranda
- Djina-Wu to Smith Track, near Kuranda

Wooroonooran Key Biodiversity Area

Behana Creek Gorge Track

-17.16756; 145.83130 | 60 m asl

Suitable for 2 ha, 20 min and/or 500 m area searches



The Behana Gorge Road turn off is about 6 km south of Gordonvale, along the Bruce Highway. Follow the road for 4.6 km until you reach the car park. This site begins at the Wooroonooran National Park sign 500 m from the Behana Creek Gorge car park on the paved walkers-only road to Clamshell Falls. Following a water supply pipe, the road traverses mixed vegetation with open forest species intermingled with riparian rainforest species. Complete surveys while walking along the track.

Look here for Wet Tropics endemics that venture into the lowlands including Macleay's Honeyeater and the vulnerable Victoria's Riflebird.



Wooroonooran Key Biodiversity Area

Goldfield Track (near entrance at Babinda Boulders)

-17.33355; 145.86571 | 80 m asl

Suitable for 2 ha, 20 min and/or 500 m area searches



This site is accessed from the eastern entrance to the Goldfield Track which traverses lowland rainforest along Pandanus-fringed Babinda Creek. A small bridge marks the edge of Wooroonooran National Park and the start of the survey site, 1km from the track entrance at the Babinda Boulders car park.

Complete a survey by walking along the track, then return. More surveys can be completed along the track, as far as you are comfortable to go, then return.

The Goldfield trail follows a 19km (one way) historic path between Babinda Boulders and the Goldsborough Valley. For the experienced, very fit and very well prepared hiker (grade 4) seeking a longer walk, further 2 hectare, 20 minute surveys are feasible along the rough trail. Check Queensland Parks and Wildlife Service alerts for wet-season closures before visiting.

Look for Wet Tropics endemics that venture into the lowlands including Southern Cassowary, Macleay's Honeyeater and the vulnerable Wet Tropics Eastern Whipbird.



Wooroonooran Key Biodiversity Area

Josephine Falls

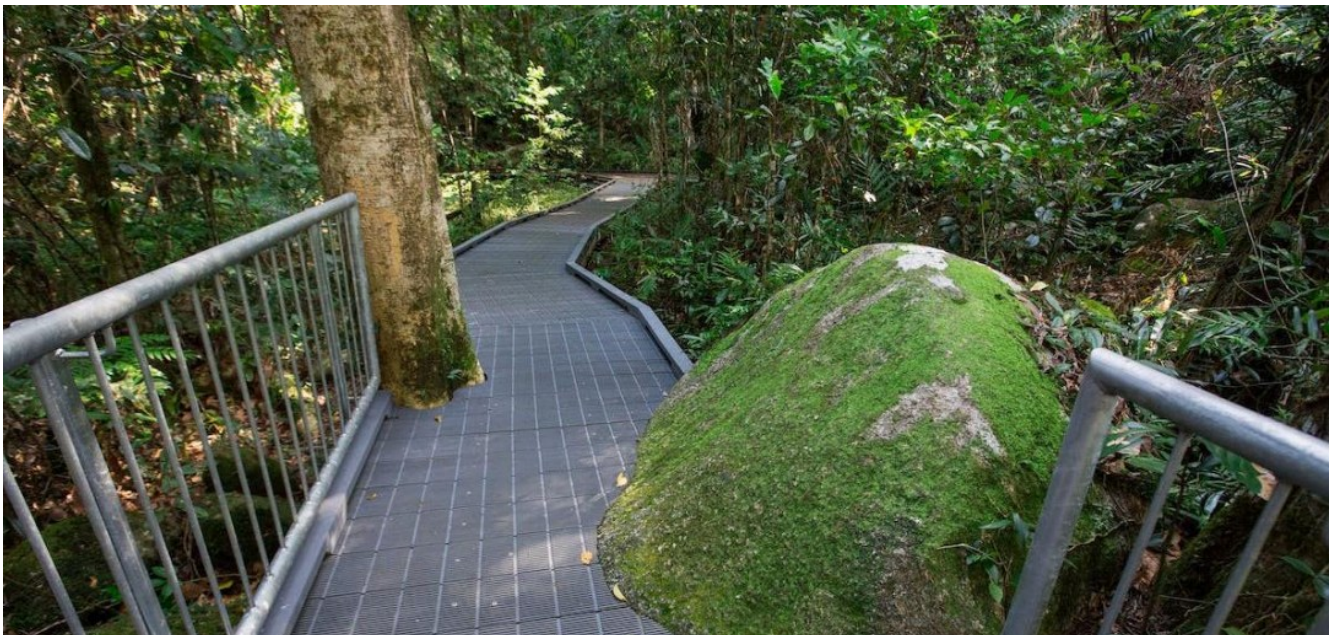
-17.43718; 145.85942 | 150 m asl

Suitable for 2 ha, 20 min and/or 500 m area searches



This site is centred on a wheel-chair accessible paved path through lush lowland rainforest. Two hectare, 20 minute and/or 500 m area searches are possible along the path by beginning 50 m beyond the shelter at the track entrance. The track is very popular with visitors to the iconic Josephine Falls which are reached 600 m from the car park. Bird observers will need to be early to avoid the rush. Complete surveys by walking along the track.

Look here for endemic species that venture into the lowlands such as Chowchilla and Victoria's Riflebird. Australian King Parrots have also been seen here.

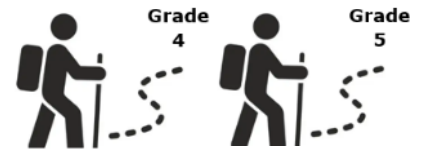


Wooroonooran Key Biodiversity Area

Bartle Frere Walking Track (near entrance at Josephine Falls car park)

-17.43750; 145.85776 | 150 m asl

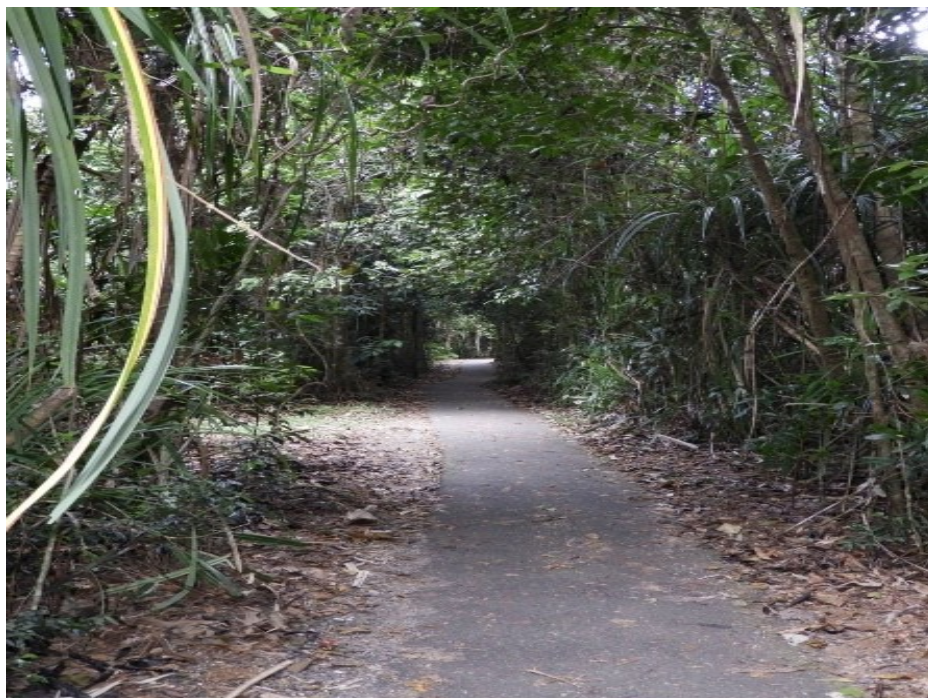
Suitable for 2 ha, 20 min survey



This site is situated at the eastern end of the narrow, rough hiking trail that leads to Broken Nose and the summit of Mt Bartle Frere (1611 m asl). You can begin a 200 m transect at the top of the first rise 50 m from the track entrance at Josephine Falls car park. From here the track is gently undulating, crossing a small stream around the 100 m mark. Complete surveys by walking along the track, as far as you are comfortable going.

Look here for endemic species that venture into the lowlands such as Chowchilla and the vulnerable Victoria's Riflebird. Cassowaries are also present here.

For the experienced, very fit and very well prepared hiker (grade 5), further 2 hectare, 20 minute surveys are feasible further along the track with the potential to cover the full elevational range within Wooroonooran National Park. Because the track rises steeply, and the elevation changes rapidly, 500 m area searches (that cannot be tied to a specific elevation) are not recommended. Check Queensland Parks and Wildlife Service alerts for wet-season closures before visiting.



Wooroonooran Key Biodiversity Area

Mamu Tropical Skywalk

-17. 61274; 145.79807 | 350 m asl

Suitable for 2 ha, 20 min searches



An entry fee applies; visit mamutropicalskywalk.com.au for details.

Mamu Tropical Skywalk features a wheelchair-accessible paved path and elevated walkways through lush rainforest, including a cantilevered viewing platform overlooking the river. The observation tower, which offers expansive views, is only accessible via stairs and requires a reasonable level of fitness.

Bird surveys can be conducted along the main path, with 2 hectare, 20 minute searches starting approximately 50 metres beyond the track entrance. Due to the site's popularity, surveys are best done early in the day to avoid peak visitor times.

Watch for Wet Tropics endemics such as the Eastern Whipbird, Brown Gerygone and Large-billed Scrubwren.



Wooroonooran Key Biodiversity Area

K-Tree Rd (off Palmerston Highway)

-17.60788; 145.77319 | 400 m asl

Suitable for 2 ha, 20 min and/or 500 m area searches



This site is centred on a narrow gravel road through low-elevation rainforest within Wooroonooran National Park. K-Tree Road is accessed from the Palmerston Highway about 25 km from Millaa Millaa and 30 km from the junction of the Palmerston and Bruce Highways, near Innisfail. Weather permitting, conventional vehicles can travel along the road with care. Park in the small roadside areas where safe, to park out of the way of occasional other road users. Complete surveys by walking along the dirt road, being careful of any traffic. For the keen, further surveys can be completed by driving and/or walking further along the road, towards South Johnstone River Campground. Check Queensland Parks and Wildlife Service alerts for wet-season closures before visiting.

Look here for endemic species that venture into the lowlands such as the vulnerable Victoria's Riflebird and Wet Tropics Eastern Whipbird.



Wooroonooran Key Biodiversity Area

South Johnstone River Campground

-17.6528641; 145.7180774 | 457 m asl

Suitable for 2 ha, 20 min and/or 500 m area searches



K Tree Road, off the Palmerston Highway, is about 25 km from Millaa Millaa or 30 km from the junction of the Palmerston and Bruce Highways near Innisfail. From the turnoff, travel 12.3 km along K Tree Road to reach the South Johnstone River camping area. This site is accessible by conventional vehicles in good weather only as the dirt road can become impassable after rain. A four-wheel drive is recommended. Check Queensland Parks and Wildlife Service alerts for wet-season closures before visiting.

The campground offers partially shaded sites close to the South Johnstone River. While there are several walking tracks in the Misty Mountains suited to experienced bushwalkers, birdwatching along the dirt access roads can be just as rewarding. At South Johnstone, this includes surveying along K Tree Road, Maple Creek Road, or simply birding around the campground.



Wooroonooran Key Biodiversity Area

Maple Creek Road (600 metre sites), Misty Mountains

-17.6695708; 145.7173752 | 640 m asl

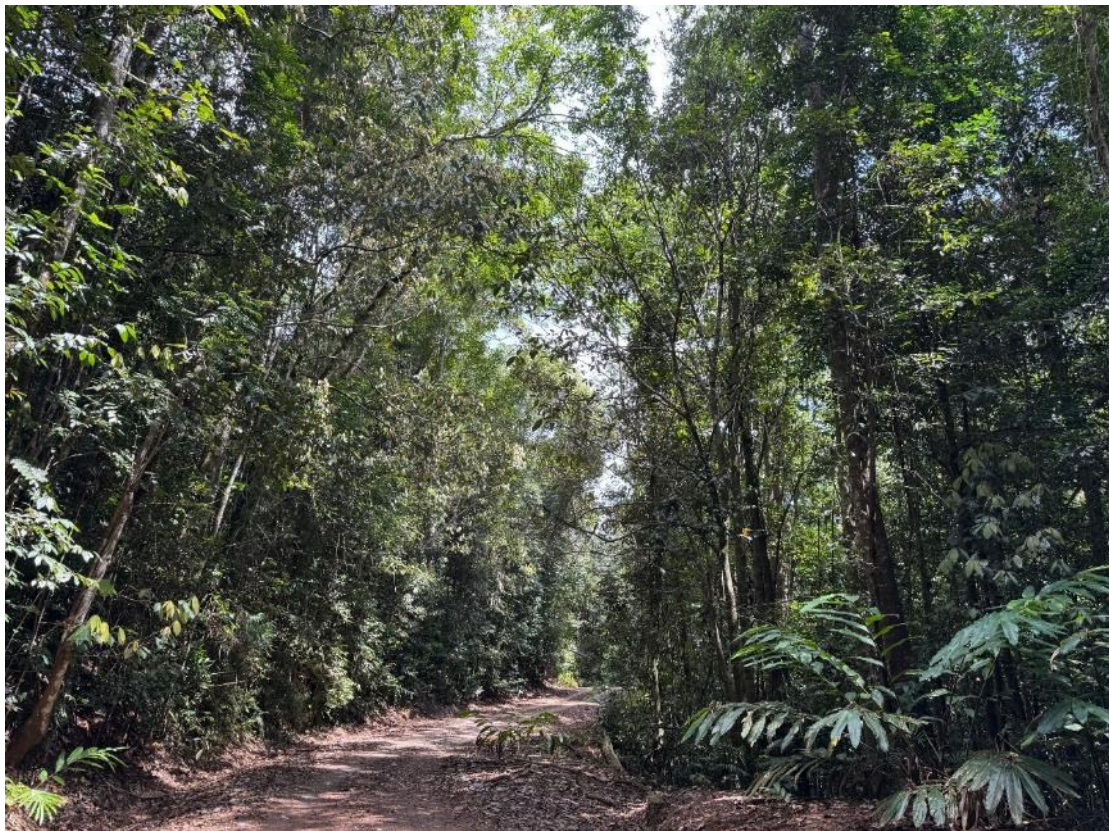
Suitable for 2 ha, 20 min and/or 500 m area searches



This site is accessible by conventional vehicles in good weather only as the dirt road can become impassable after rain. A four-wheel drive is recommended. Check Queensland Parks and Wildlife Service alerts for wet-season closures before visiting.

From the South Johnstone Campground, cross the South Johnstone River causeway and drive for 3.4 km along Maple Creek Road. You will pass the Gorrell Track western trailhead on the left. Park in the small roadside areas where safe, to park out of the way of occasional other road users. Complete surveys by walking further along the dirt road, being careful of any traffic. Survey as far as you are comfortable walking then return to your vehicle.

Look for a range of species at this site including Fernwren, Wet Tropics Brown Gerygone and Eastern Whipbird.



Wooroonooran Key Biodiversity Area

Henrietta Creek Campground (Palmerston Highway)

-17.5986965; 145.7588140 | 380 m asl

Suitable for 2 ha, 20 min and/or 500 m area searches



Henrietta Creek Campground is accessible year-round by conventional vehicle and is on the Palmerston Highway about 38 km from Innisfail and 25 km from Millaa Millaa. The site includes a day use area and camping ground, with amenities, bordered by Henrietta Creek and surrounded by rainforest. The Nandroya Falls walking track is accessible from Henrietta Creek day use area. Complete surveys by walking around the clearing and walking tracks to the creek.

Look here for endemic species that venture into the lowlands such as the Victoria's Riflebird, Wet Tropics Eastern Whipbird, Large-billed Scrubwren and Brown Gerygone. There may even be kingfisher along the creeks.



Wooroonooran Key Biodiversity Area

Nandroya Falls Walking Track (off Palmerston Highway)

-17.59774083; 145.7562033 | 380 m asl

Suitable for 2 ha, 20 min and/or 500 m area searches



The Nandroya Falls walking track begins past the footbridge over Henrietta Creek, accessed from Henrietta Creek Campground on the Palmerston Highway, approximately 38 km from Innisfail and 25 km from Millaa Millaa. Check Queensland Parks and Wildlife Service alerts for wet-season closures before visiting.

Conduct surveys while walking along the track. The area supports a range of mid-altitude rainforest species, including Yellow-breasted Boatbill, monarchs, catbird and Victoria's Riflebird.

Survey to the extent you are comfortable walking, or continue on to Nandroya Falls, a 6 km return walk. The track crosses several small creeks and passes Silver Falls, a 10 m cascade, enroute. Nandroya Falls are a dramatic feature of the walk, where Douglas Creek drops in an uninterrupted 50 m plunge from a basalt escarpment.



Wooroonooran Key Biodiversity Area

Scenic Drive (from Palmerston Highway)

-17.587209; 145.703105 | 680 m asl

Suitable for 2 ha, 20 min and/or 500 m area searches



This site is located on a section of the old Palmerton Highway (now called Scenic Drive) through mid-elevation rainforest within Wooroonooran National Park. It is accessed from the Palmerston Highway, about 16 km from Millaa Millaa. This one-way road is narrow old bitumen and accessible by conventional vehicles with care, though roadside parking is limited. Be sure to park out of the way of occasional other road users. Commence surveys about 100 m from the Palmerston Highway entrance into Scenic Drive and by walking further along the road, being careful of any traffic.

Upland endemic bird species can be found here including species of conservation concern such as Grey-headed Robin, Bower's Shrike-thrush, Brown Gerygone, Large-billed Scrubwren and Wet Tropics Australian King-Parrot.

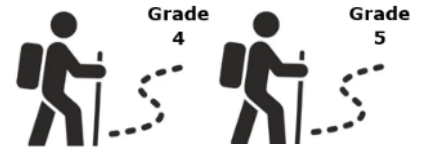


Wooroonooran Key Biodiversity Area

Bartle Frere Walking Track (from Gourka Road, Butchers Creek) and/or Junction Camp site

-17.379351; 145.762748 | 700 m asl

Suitable for 2 ha, 20 min and/or 500 m area searches

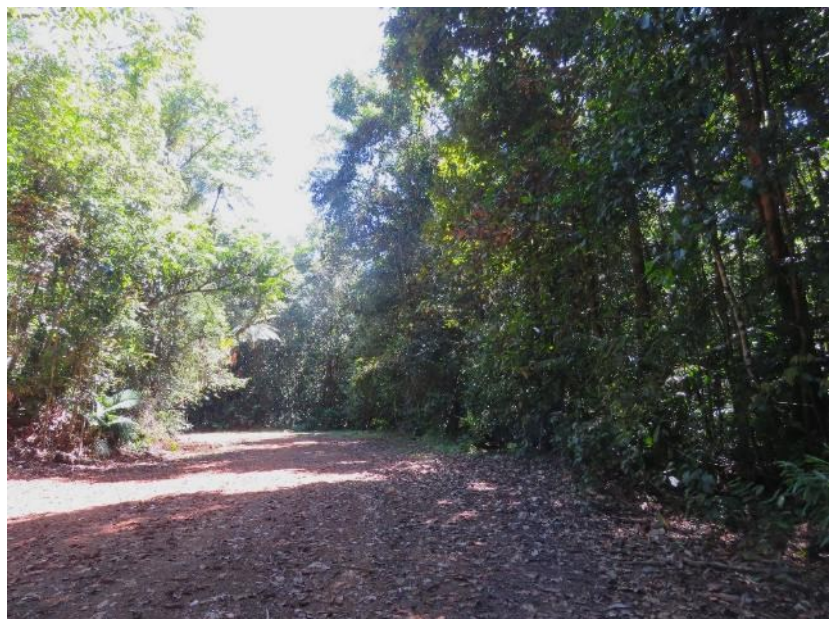


This site is centred at Junction Camp and the western trailhead of the narrow, rough hiking trail that leads to the summit of Mt Bartle Frere (1611 m asl). The camp site and trailhead are reached via Gourka Road, which is 4WD only unless it is very dry. Check Queensland Parks and Wildlife Service alerts for wet-season closures before visiting.

The initial section of the walking trail is wide and gently undulating. Begin surveys from Junction Camp and then enter the Bartle Frere trail from the car park. Complete surveys by walking along the track. Alternatively, it is easy walking to complete surveys along the dirt access road at Junction Camp.

Upland endemic bird species can be found here including species of conservation concern such as bowerbirds, Grey-headed Robin, Bower's Shrike-thrush, and Wet Tropics Australian King-parrot.

For the experienced, very fit and very well prepared hiker (grade 5) seeking a longer walk, further 2 hectare, 20 minute surveys are feasible along the Bartle Frere Walking Track with the potential to cover higher elevations on the western side of Mount Bartle Frere. Because the track rises steeply, and the elevation changes rapidly, 500 m area searches (that cannot be tied to a specific elevation) are not recommended.



Wooroonooran Key Biodiversity Area

Stockwellia Tree Track (on Gourka Road, Butchers Creek)

-17.378609; 145.740051 | 750 m asl

Suitable for 2 ha, 20 min survey



The walking track is located approximately 3.5 km from the junction of Gourka Road and the Old Cairns Track, on the right-hand side of the road when travelling towards the western Mount Bartle Frere walking track.

This site follows a rough, poorly marked Grade 5 trail. Take care to remain on the track and be adequately prepared for remote conditions. A 2 hectare, 20 minute survey can be completed by starting at the trailhead and walking approximately 200 m along the trail. The rainforest is lush and supports high-altitude species, including Fernwren. Further surveys along the track are not recommended.



Wooroonooran Key Biodiversity Area

Windin Falls Walking Track (from Gourka Road)

-17.364005; 145.7491817 | 740 m asl

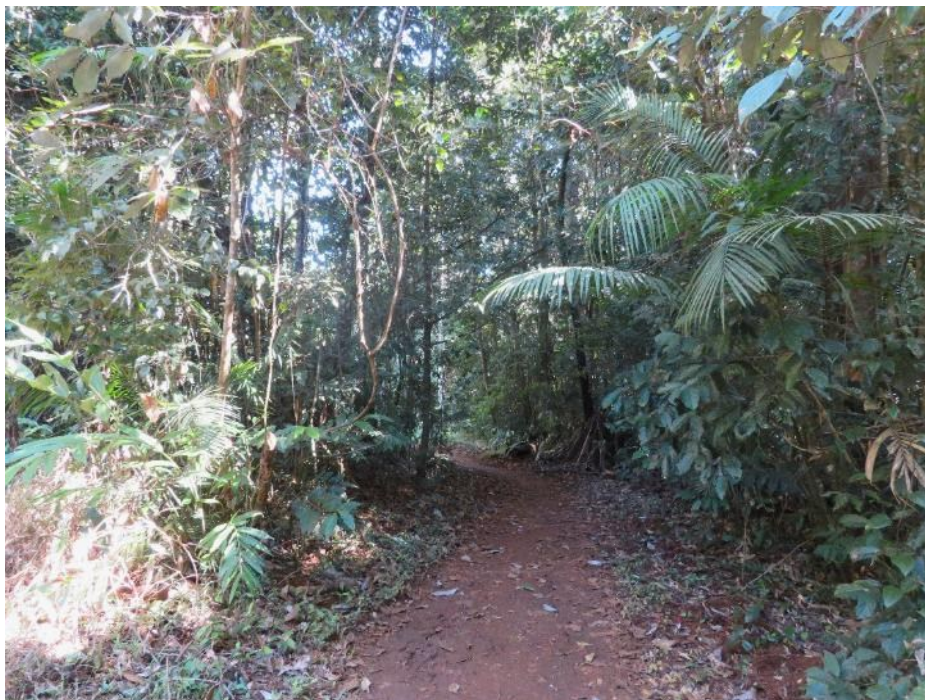
Suitable for 2 ha, 20 min and/or 500 m area searches



This site is situated at the beginning of the Windin Falls hiking trail. The site is reached via Gourka Road, which is 4WD unless it is very dry. The road into the National Park may be closed in the wet season. The initial kilometre or so of the walking trail is gently undulating and very birdy. Walk along the trail about 50 m before commencing surveys. This track is also very popular with visitors to the iconic Windin Falls (Grade 4 track, 11.5 km return). Bird observers will need to be early to avoid the rush. Complete surveys by walking along the walking track.

Upland endemic bird species can be found here including species of conservation concern such as bowerbirds, Atherton Scrubwren, Grey-headed Robin, Bower's Shrike-thrush, and Wet Tropics Australian King-Parrot.

For the very fit and very well-prepared hiker, further 2 hectare, 20 minute surveys are feasible further along the trail with the potential to cover declining elevations. Because the track may change elevations rapidly, 500 m area searches (that cannot be tied to a specific elevation) are not recommended.



Wooroonooran Key Biodiversity Area

Suttie's Gap Road (Misty Mountains)

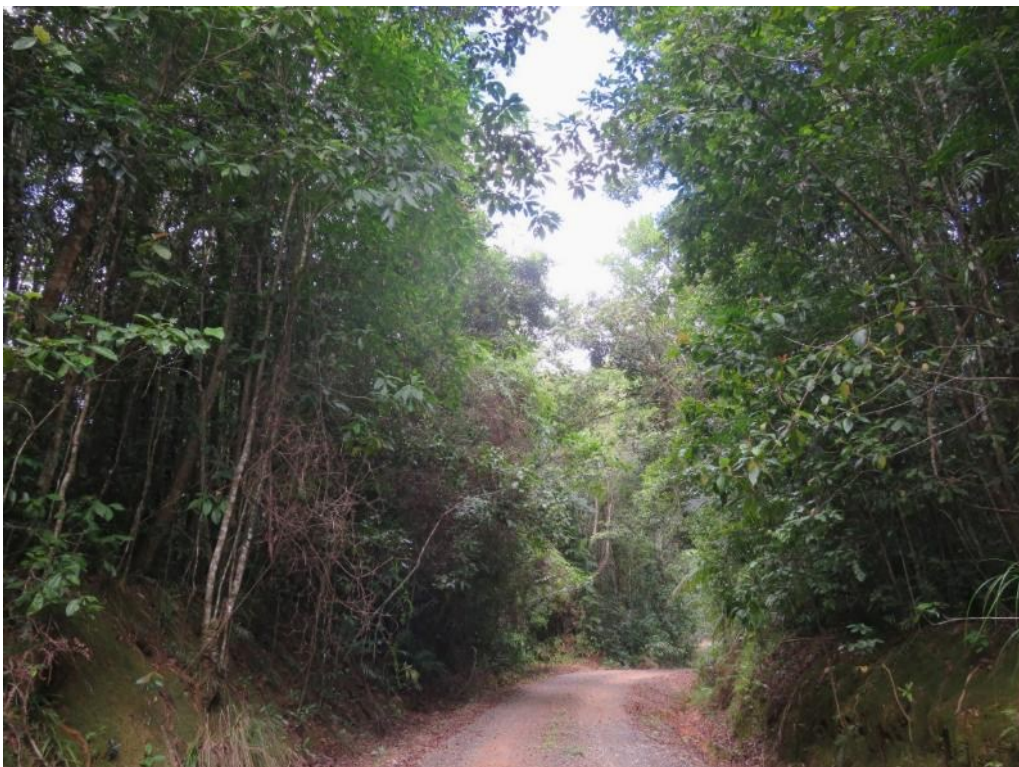
-17.637757; 145.633758 | 740 m asl

Suitable for 2 ha, 20 min and/or 500 m area searches



This site is centered on a narrow gravel road through mid-elevation rainforest within Wooroonooran National Park. From Millaa Millaa, travel for 10.5 km along the Ravenshoe–Millaa Millaa scenic drive (Old Palmerston Highway) and turn left into Maalan Road. After 6.5 km turn left again into Suttie's Gap Road and follow it until you reach the national park gate. Note that a 4WD vehicle is required in wet weather and the road may be closed in the wet season. The survey site is located about 400 m from the national park gate. Park in the small roadside areas where safe, to park out of the way of occasional other road users. Complete surveys by walking slowly along the dirt road being careful of any traffic, then return to your vehicle.

Upland endemic bird species can be found here including species of conservation concern such as Fernwren, bowerbirds, Grey-headed Robin, and Bower's Shrike-thrush. Listen for the distinctive calls of tooth-billed bowerbirds as you pass through in breeding season.



Wooroonooran Key Biodiversity Area

Hinsen Creek trailhead, Suttie's Gap Road (Misty Mountains)

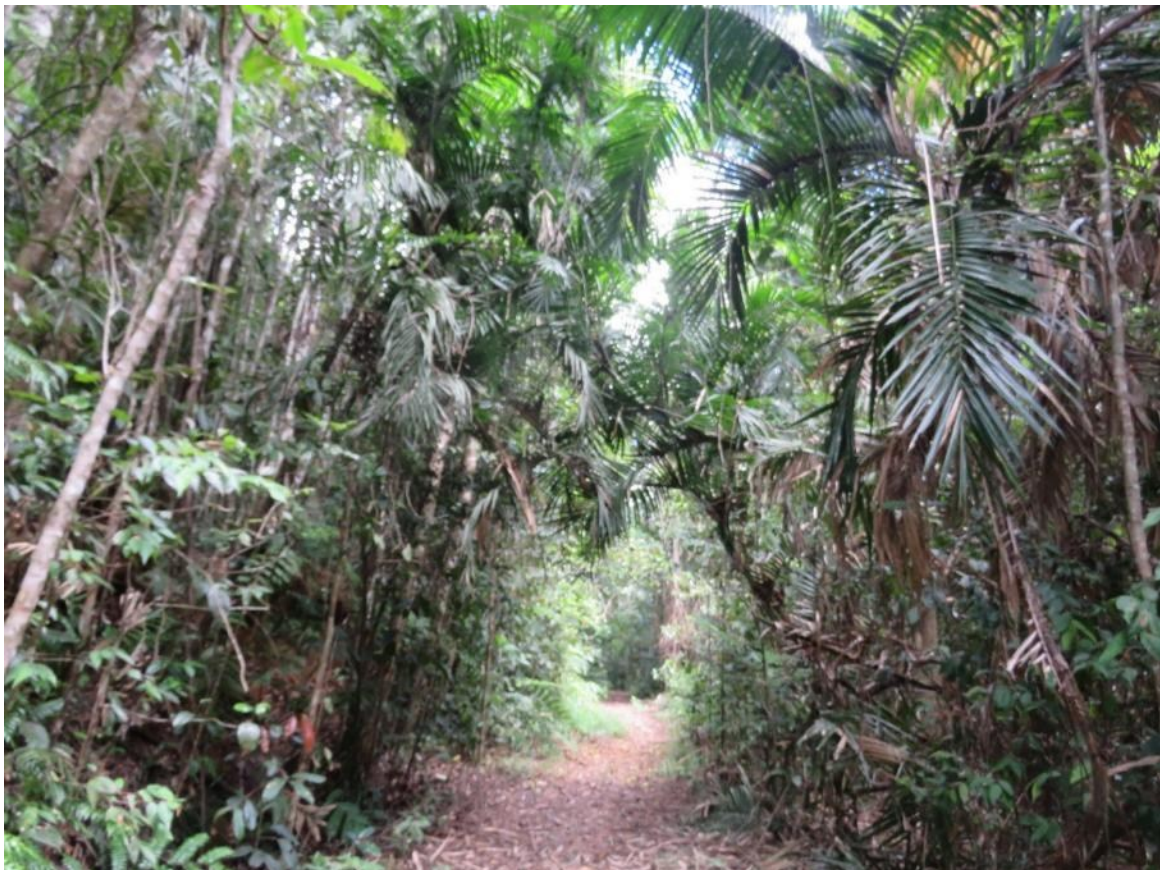
-17.656266; 145.640895 | 680 m asl

Suitable for 2 ha, 20 min and/or 500 m area searches



This site is the first kilometre or so of the Hinsen Creek Trail, a narrow walking track through mid-elevation rainforest. From Millaa Millaa: travel for 10.5 km along the Ravenshoe–Millaa Millaa scenic drive (Old Palmerston Highway) and turn left into Maalan Road. After 6.5 km turn left again into Suttie's Gap Road. Travel 7.4 km along Suttie's Gap Road (unsealed) to Hinson Creek trailhead. Note that a 4WD vehicle is required in wet weather and the road may be closed in the wet season. The survey site starts at the trailhead. Complete surveys by walking slowly along walking track, then return.

Upland endemic bird species can be found here including species of conservation concern such as Fernwren, bowerbirds, Grey-headed Robin and Bower's Shrike-thrush. Listen for the distinctive calls of tooth-billed bowerbirds as you pass through in breeding season.



Wooroonooran Key Biodiversity Area

Gillies Highway Mulgrave River access

-17.13528; 145.76152 | 60 m asl

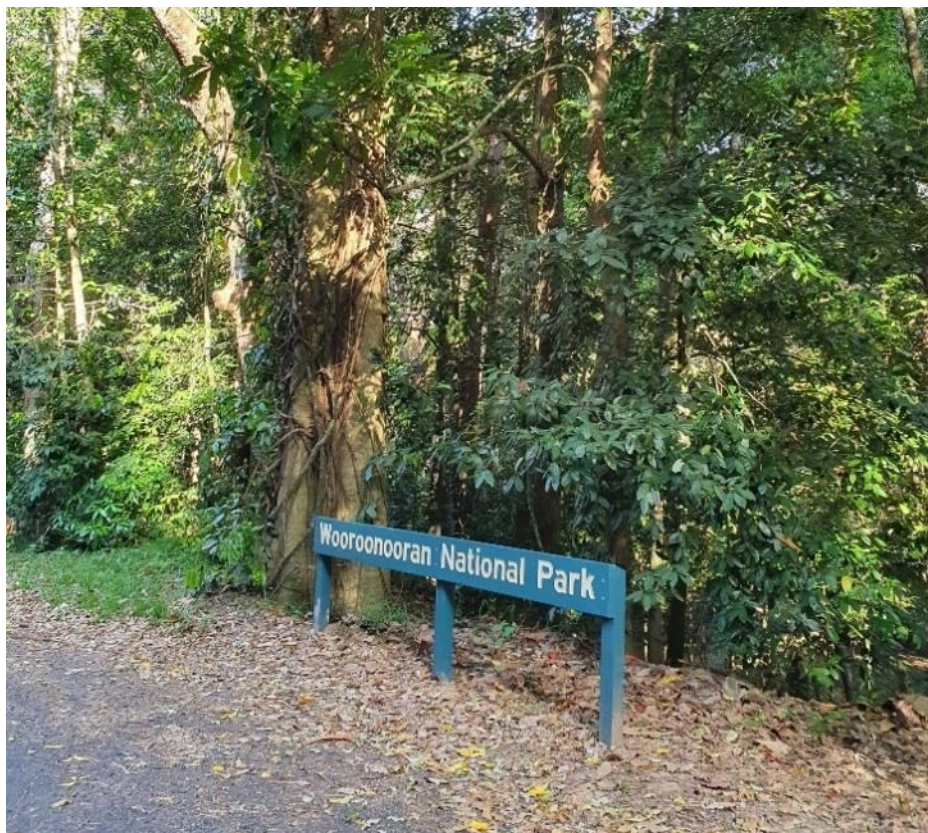
Suitable for 2 ha, 20 min survey



Access this site behind the National Park sign in a small pull-over area on the south side of the Gillies Highway, approximately 5 km west of Gordonvale. A small track behind the park sign leads through riparian vegetation and across a cane train track to the Mulgrave River.

The site is affected by noise from the Gillies Highway so choose a quiet time of day and take care as there may be rubbish, such as broken bottles. Don't attempt to access the site if there has been a recent flood. There are no facilities here.

Look for a range of lowland and riparian bird species including Yellow Oriole and Yellow-spotted Honeyeater. Complete surveys by walking from the sign to the riverbank.



Wooroonooran Key Biodiversity Area

Cathedral Fig Tree, Danbulla Forest Drive

-17.1772; 145.660 | 757 m asl

Suitable for 2 ha, 20 min area search



Cathedral Fig Tree is located about 5 km along Danbulla Road from its eastern entrance on the Gillies Highway. A short 300 m return walk (Grade 2) leads around the base of this towering heritage listed 500-year-old *Ficus virens*, which rises nearly 50 metres and creates a breathtaking natural cathedral.

The track and surrounding area are suitable for a 2 hectare, 20 minute survey.

Over 165 bird species have been recorded here. Look out for Chowchilla and other Wet Tropics endemic birds in the lush rainforest that surrounds this ancient giant.

There are no facilities here.



Wooroonooran Key Biodiversity Area

Mobo Creek Crater, Danbulla Forest Drive

-17.1732; 145.639 | 726 m asl

Suitable for 2 ha, 20 min area search



Mobo Creek Crater is located on Danbulla Road, 4.6 km from the eastern entrance and 23.4 km from the western entrance.

The 630 m circuit walk (Grade 3) winds through lush upland rainforest and follows the scenic Mobo Creek, crossing it at several points. The area is rich in birdlife, with over 70 species recorded. Complete surveys by walking slowly along walking track.

There are no facilities here.



Wooroonooran Key Biodiversity Area

Lake Euramoo Lookout and Track (Danbulla Road)

-17.16165; 145.62765 | 762 m asl

Suitable for 2 ha, 20 min and/or 500 m area search



Lake Euramoo is located 9.6 km from the eastern entrance of Danbulla Road, off the Gillies Highway.

A 500 m circuit track (Grade 3) winds through lush rainforest. The surrounding forest supports a variety of birdlife, making this a rewarding place to complete surveys. Complete surveys while walking along walking track.

Don't miss the lookout, where you can view the crater lake's unique dumbbell shape, formed by twin volcanic explosions!

There are no facilities, so come prepared and enjoy the walk.



Wooroonooran Key Biodiversity Area

Arthur Baillie Road, near Ravenshoe

-17.68188311; 145.5203221 | 1025 m asl

Suitable for 2 ha, 20 min and/or 500 m area searches



Arthur Baillie Road is a quiet and scenic birding spot, tucked away 9.5 km along Tully Falls Road from Ravenshoe. This unsealed road meanders through a beautiful mix of private rainforest land and lush World Heritage-listed rainforest.

Thanks to its elevation, the area is a haven for high-altitude bird species, offering birdwatchers the chance to encounter a rich and varied assemblage of upland birds.

Complete surveys while walking along walking track and be mindful of occasional passing vehicles.



Wooroonooran Key Biodiversity Area

Charmillan Creek (Wabunga Wayemba)

-17.68461; 145.52291 | 1013 m asl

Suitable for 2 ha, 20 min and/or 500 m area searches



Located 11.5 km from Ravenshoe on Tully Falls Road, the Charmillan Wabunga Wayemba Rainforest Track is a 5.5 km return walk (moderate) through high-altitude rainforest.

The track leads to a secluded waterfall, where clear mountain water flows over moss-covered rocks into a shallow, peaceful pool.

Complete surveys while walking along the track. This area is ideal for spotting high-elevation Wet Tropics bird species in a quiet, natural setting. If time is limited, even a short 200 – 500 m walk along the track can be rewarding. 2 ha, 20 min



Wooroonooran Key Biodiversity Area

Tully Gorge Lookout (near Ravenshoe)

-17.77724,, 145.55688 | 720 m asl

Suitable for 2 ha, 20 min and/or 500 m area searches



Tully Gorge Lookout is located 23 km along Tully Falls Road from Ravenshoe. A short 100 m return walk leads to a spectacular viewpoint perched above the gorge, offering sweeping views of the falls and the steep, forested valley below.

A 2 ha, 20 min survey can be completed while walking around the car park and lookout area, and along the entrance road—just take care around any passing traffic.

For those with more time, surveys can also be completed on the 1.3 km return river walk (Grade 3). The boardwalks along this track can be slippery when wet.

Facilities here include toilets and picnic tables.



Wooroonooran Key Biodiversity Area

Kahlpahlim Rock Trail, Davies Creek, Dinden National Park

-17.03308; 145.6109 | 756 m asl

Suitable for 2 ha, 20 min and/or 500 m area searches



The Kahlpahlim Rock Trail begins 13.3 km along Davies Creek Road. Four-wheel-drive is recommended on the upper reaches of Davies Creek Road, especially in wet conditions. The area may be seasonally closed so check with the Queensland Parks and Wildlife Service before you visit.

The trail is a challenging 10.8 km return hike (Grade 4) that climbs steeply along an old logging route, entering rainforest where towering blue kauris grow and small creeks flow. Complete surveys while walking along the track. Listen for the distinctive calls of tooth-billed bowerbirds as you pass through in breeding season.

Beyond the rainforest, the trail becomes steeper, winding through dry forest dominated by casuarinas and banksias.

At 4.4 km, a junction marks the final 1 km stretch to the impressive granite outcrops of Kahlpahlim Rock. For safety, do not climb beyond the boulders, and remember this is a trail for experienced, well-prepared hikers.



Wooroonooran Key Biodiversity Area

Davies Creek Road – near Kahlpahlim Rock Trailhead

-17.03308; 145.6109 | 756 m asl

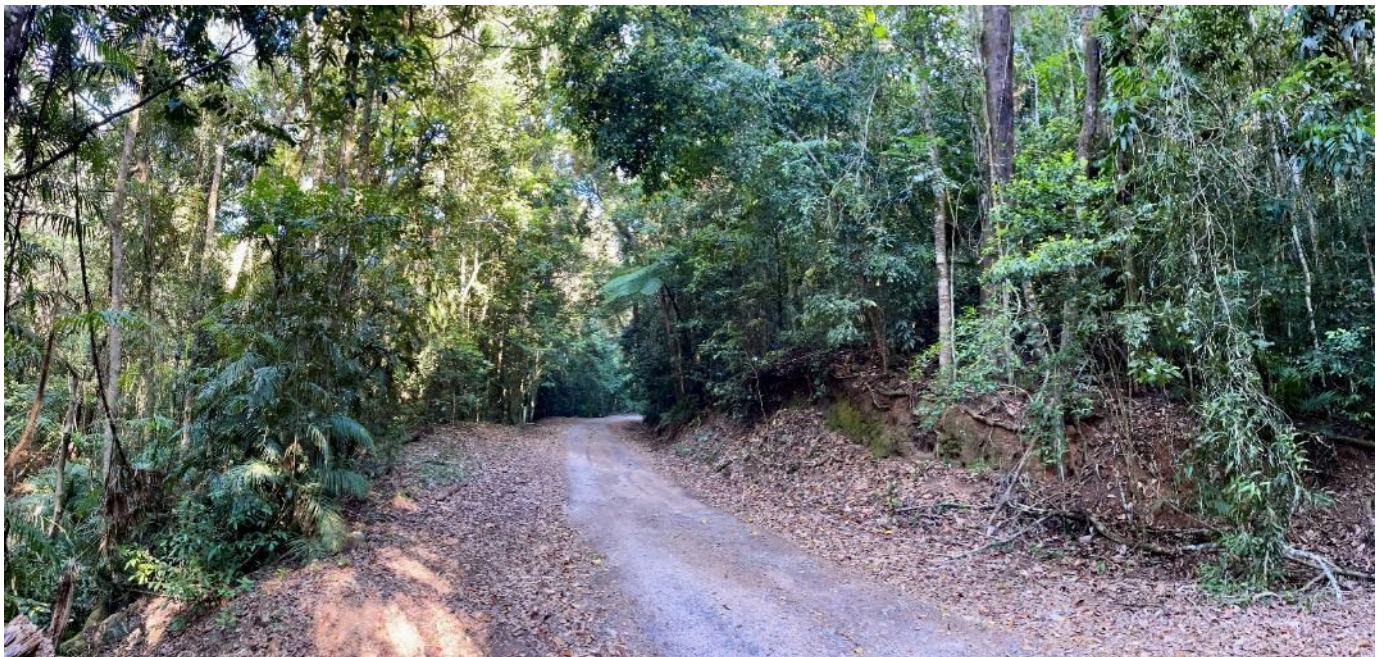
Suitable for 2 ha, 20 min and/or 500 m area searches



At the end of Davies Creek Road, 13.3 km from the Kennedy Highway, the area near the Kahlpahlim Rock Trailhead offers rewarding birdwatching opportunities.

For a gentle alternative to the steep Kahlpahlim Rock Trail, simply walk back along the Davies Creek dirt access road through rainforest, keeping an eye out for high elevation species and taking care around occasional traffic. Complete surveys while walking along the road, then return to your vehicle.

The area may be seasonally closed so check with the Queensland Parks and Wildlife Service before you visit.



Wooroonooran Key Biodiversity Area

Barron Falls lookout track near Kuranda

-16.8362; 145.6422 | 357 m asl

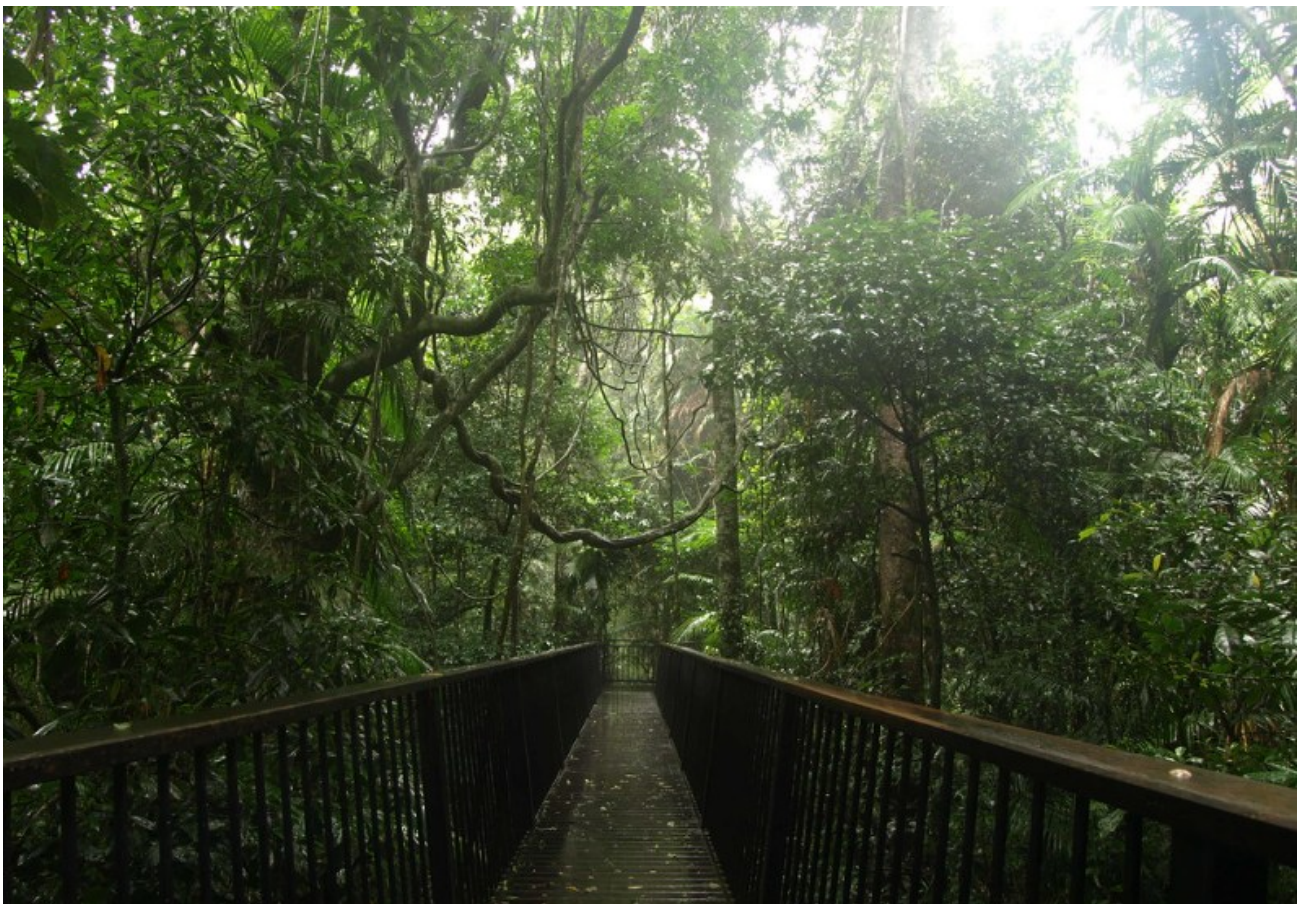
Suitable for 2 ha, 20 min and/or 500 m area searches



Access is via the Barron Falls lookout track car park, 3.5 km from Kuranda.

This 1.2 km return Grade 1 walk follows an elevated, wheelchair-accessible (with assistance) boardwalk suspended above the forest floor. It winds through lush rainforest and open eucalypt canopy, leading to the Barron Falls lookout and the historic Barron Falls railway platform.

Besides the spectacular view of Barron Falls, the area is a good place to spot mid-elevation rainforest birds. Complete bird surveys as you wander along the track. Due to the site's popularity, surveys are best done early in the day to avoid peak visitor times.



Wooroonooran Key Biodiversity Area

Djina-Wu to Smith Track, near Kuranda

-16.8829; 145.6321 | 388 m asl

Suitable for 2 ha, 20 min and/or 500 m area searches



To reach Speewah Conservation Park campground, drive 6.5 km past Kuranda on the Kennedy Highway and turn onto Speewah Road. Follow signs for 5.2 km, then turn left onto winding Stoney Creek Road, then left onto steep Smiths Track Road, which leads to the park.

Djina-Wu Walk is a 1.6 km return walk beginning at Speewah Conservation Park camping area. The track has several creek crossings, boardwalks, and a high bridge spanning a deep gully, all while winding through spectacular rainforest.

Djina-Wu Walk links to the longer and more challenging Douglas and Smith tracks, suitable only for fit, well-prepared, and experienced hikers.

Djina-Wu is a rewarding birdwatching location, especially in winter, when high elevation species may move to lower altitudes. Surveys can be completed while walking along the track.

There are facilities in the campground.



Birds With Altitude project



Double-eyed Fig Parrot © Keith Fisher